



WATERPROOFING
15 YEARS
WARRANTY



Individual & collective housing



Commercial buildings and resorts



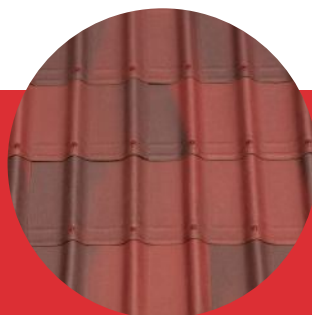
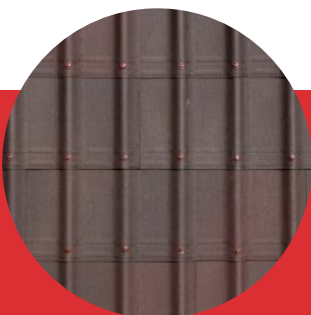
Public-access buildings



Leisure housing



Renovation

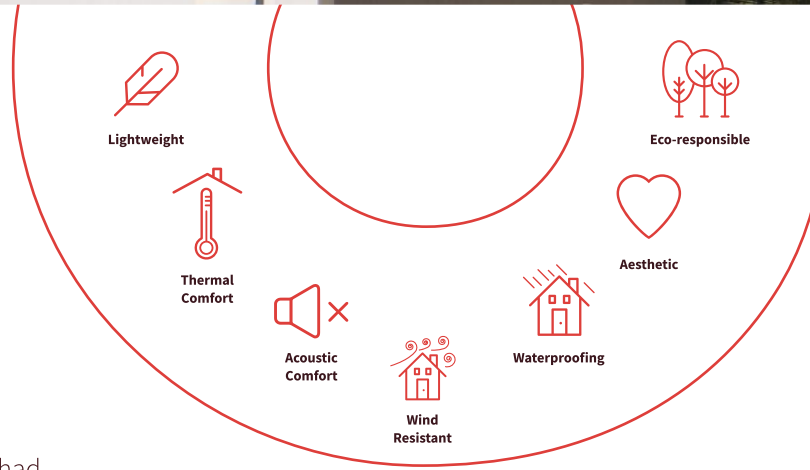




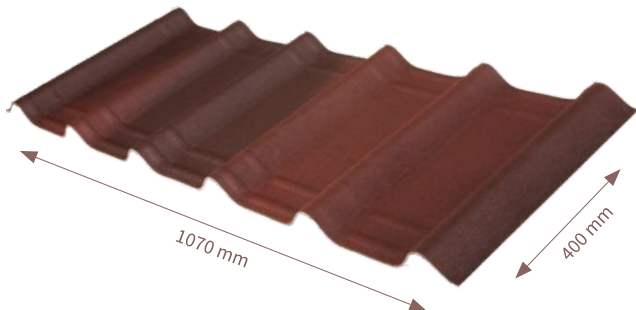
ONDUVILLA®

Aesthetically pleasing and reliable, ONDUVILLA® tiles are the ideal solution to cover every kind of buildings. This unique product is lightweight, attractive and extremely simple to install on all kind of metal and wooden structures.

ONDUVILLA® material does not contain any asbestos, and never had. ONDUVILLA® material does not contain any metal, it will never rust!



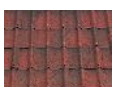
Technical characteristics



Length	1070 mm
Width	400 mm
Thickness	3 mm
Wave Height	38 mm
Gross Surface	0.43 m ²
Corrugations + Flats	6 + 5
Weight	3.1 kg/m ²

Colours

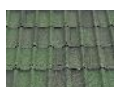
PIGMENTED COLOURS



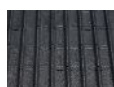
• Shaded Red



• Shaded Brown



• Shaded Green



• Anthracite Black

PAINTED COLOURS



• Terracotta 3D



• Classic Red 3D



• Classic Green 3D



• Stone Grey 3D

Accessories

							
RIDGE A90 900 mm X 420 mm	VALLEY G100 1000 mm x 500 mm	SLIM CAP 1060 mm x 175 mm	CLOSURE CAP 1060 mm x 175 mm	VERGE PIECE 1040 mm x 105 mm x H 114 mm	APRON PIECE 1020 mm x 140 mm	TRANSPARENT CLEAR TILE 496 mm X 400 mm	SPEEDY SCREW Diameter 4,2 mm Length 65mm (+3 mm) Length 60mm (+3 mm)

Lightweight

The extremely lightweight nature of ONDUVILLA® tiles ensures that the structural weight of the building can be reduced. ONDUVILLA® ensures significant dead load reduction when compared to traditional tiles. The excellent wind resistance offered by ONDUVILLA® is also a key factor for design.

Waterproofing guaranteed

Backed by exclusive SealSmart technology, the elasticity of ONDUVILLA®'s composite material allows it to shrink firmly around each nail, creating a permanently leak-resistant barrier. And the waterproofing is secured thanks to double-embossment technology at the overlaps.



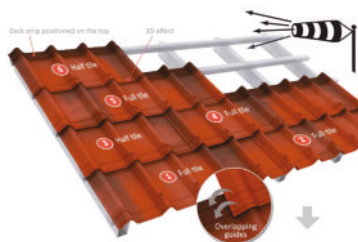
Eco Responsibility

ONDUVILLA® materials are composed of recycled fibers and use natural pigments for colouration. Like all ONDULINE® products, ONDUVILLA® contains no asbestos.

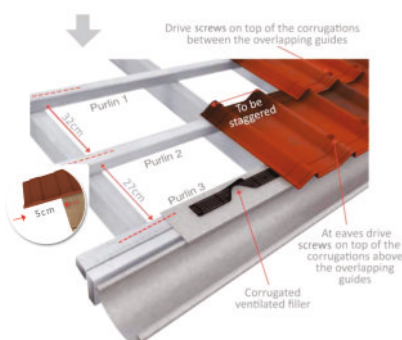
Installation instructions

Start installation at eave, in the opposite direction of the prevailing wind. Stagger the rows, by starting the second row with a half tile. Ensure proper waterproofing by aligning the overlapping guides.

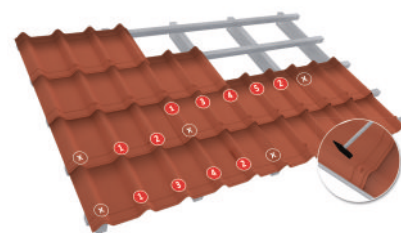
Min roof pitch to be 15° (27%)



Due to ONDUVILLA®'s overhang, the distance between the first and second battens is reduced (27cm instead of 32cm). The overhang has to be max 5cm.



The fixing on each corrugation should be done in the right order and in between the 2 overlapping guides. Do not fix those corrugations that will be overlapped by the next tile or verge piece.



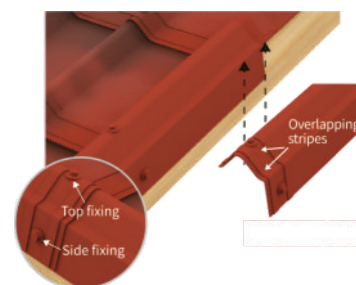
Cover the ridge line with the Standard ridge or Slim cap and fasten it on each side of the roof. The direction of the overlap is opposite to the direction of the prevailing winds. The CLOSURE CAP is used for the finishing of the ridge line.



Position the valley, and fasten it with standard nails. Fix the nails on top of the corrugations, into the supporting batten. At the ridge point, cut the valleys and fix them with standard nails. The empty surface will be used to glue the waterproofing solution.



The aesthetics and wind uplift protection can be optimized by using the verge element accessory, which is fixed first on the sidewall, then as well on the top of the corrugation.



* For detailed technical fixing guidelines, please contact our technical department

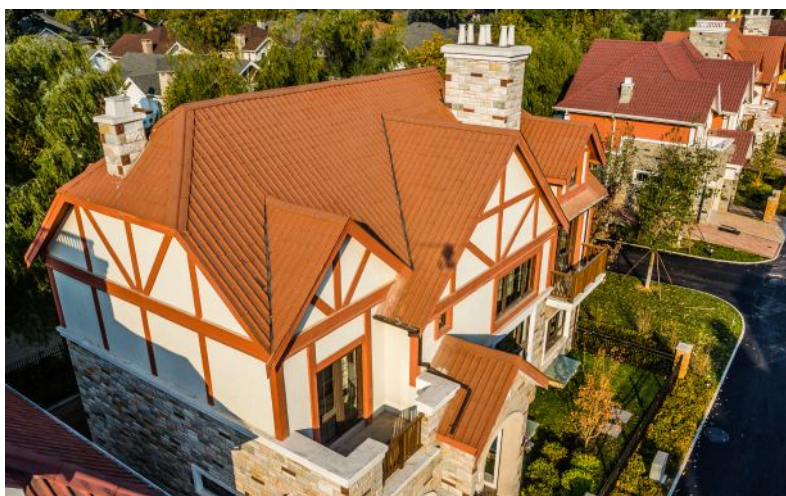
The Onduline® Group

The Onduline® Group is a world leader in lightweight roofing and underroofing solutions and a well-recognized global player in the construction industry. With outlets in over 120 countries across 5 continents, Onduline® is firmly oriented towards its end users.



To meet the needs and expectations of our users, Onduline® delivers robust yet flexible solutions offering guaranteed protection for buildings and the people inside.

Onduline®'s core values come with a "protection above all" pledge. We strive to constantly improve the way we work in order to provide our clients with affordable and ecologically responsible roofing and solutions that improve the indoor and outdoor environment and offer a better climate to live and work in.



- **Worldwide leader** in lightweight roofing
- **75 years** of industry experience
- Around **1600 employees** from **43** nations
- **9 plants** in **8 countries**, fully certified
- Present in over **120 countries** via **40 subsidiaries**
- Over **150 million m²** of roofing solutions sold every year

OFIC Building Materials India Pvt. Ltd.

CIN No. : U45309KA2008PTC048153
Unit 307, 2nd floor, Prestige Plaza,
Yelahanka New Town Main Road, Yelahanka,
Bengaluru - 560 065
Tel : +91 91080 00444 / +91 95136 17160
Email: sales@ondulineindia.com

in.onduline.com



Onduline®

Lightweight Roofing Systems