

ONDULINE®



Individual & collective housing



Commercial buildings and resorts



Public-access buildings



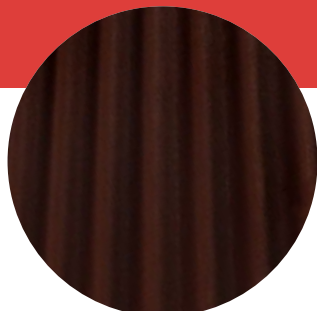
Leisure housing



Warehouses



Renovation



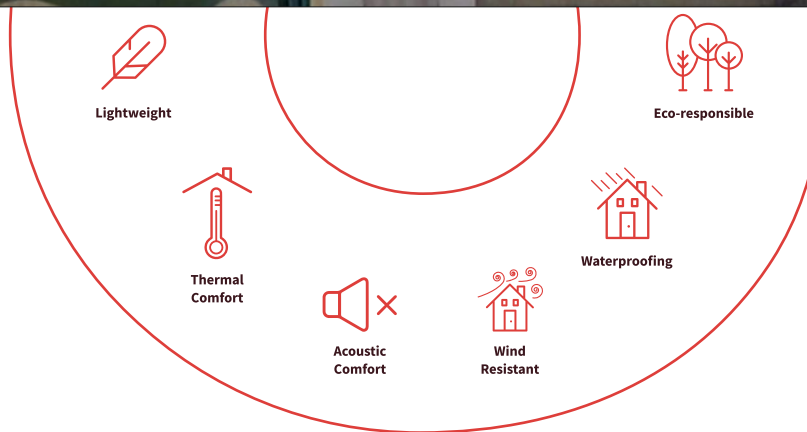
Onduline®

Lightweight Roofing Systems



ONDULINE®

ONDULINE® CLASSIC is the original corrugated roofing system, an extremely tough lightweight roofing and wall cladding system.



ONDULINE® CLASSIC

Technical Characteristics

Length	2000 mm
Width	950 mm
Thickness	3 mm
Height of corrugation	38 mm
Gross surface	1.90 m ²
# Corrugations per sheet	10
Weight	3.4 kg/m ²



Colours



• Red



• Brown



• Green

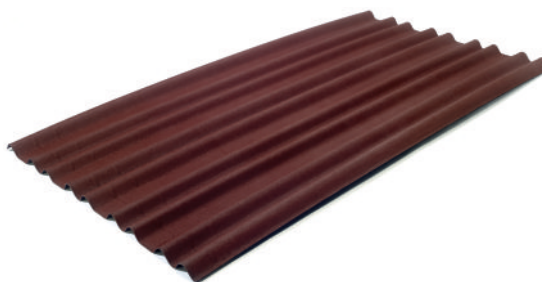


• Black

ONDULINE® DURO 235

Technical Characteristics

Length	2000 mm
Width	1055 mm
Thickness	3 mm
Height of corrugation	38 mm
Gross surface	2.11 m ²
# Corrugations + Flats	9 + 4
Weight	3.3 kg/m ²



Accessories

						
RIDGE C100 1000 mm X 470 mm	VALLEY G100 1000 mm x 500 mm	VERGE PIECE 1040 mm x 105 mm x H 114 mm	ONDUCLAIR® PC 95 2000 mm x 950 mm	ONDUCLAIR® DURO 235 2000 mm x 1045 mm	CORRUGATED FOAM FILLER 1045 mm x 30 mm 610 mm	SPEEDY SCREW Diameter 4.2 mm Length 65 mm (+3 mm) Length 60 mm (+3 mm)

ONDULINE® is a lightweight roofing solution ideal for any kind of buildings. ONDULINE® material is produced as a single layer to provide superior technical performance and longer life span versus multi-layer technologies. Mono-layer technology guards against de-lamination over a period of time and ensures a constant level of quality.

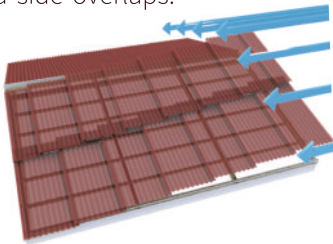
ONDULINE® sheets and roofing accessories are extremely lightweight, making them fast and easy to install. ONDULINE® is guaranteed for its waterproofing performance. The colouring of the sheet is achieved through a unique pigmentation process which ensures that the colour is stained into the sheet. In warm weather, the material helps to maintain a consistent, comfortable temperature inside the building, while composite fibers aid noise reduction, especially during heavy rain.

At ONDULINE®, our expert production and quality control teams ensure consistent production standards throughout every step of the manufacturing process, to deliver the highest quality roofing products, installers and home owners can count on. ONDULINE® corrugated sheets and associated accessories are also 100% eco-friendly and contains no asbestos.

Installation instructions

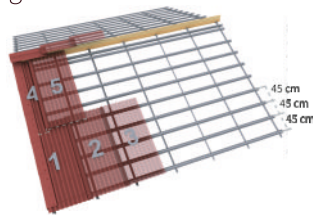
General

Start fixing sheets over the gutter line with max 7 cm overhang, in the opposite direction to the prevailing winds. The second row has to be started with half a sheet cut parallel to the corrugations, to avoid side overlaps.



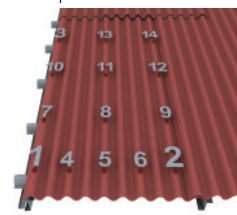
Frame & overlap

ONDULINE® sheet shall be supported by purlins with maximum width distance of 45 cm. Fix the bottom purlins first. The minimum roof pitch should be 15 degrees. The end overlap should be minimum 20cm and side overlap, 1 corrugation.



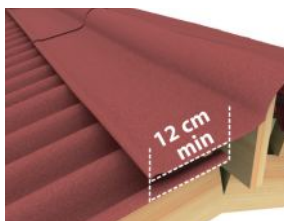
Fixing

14 screws should be drilled per sheet. 5 screws at each corrugation at the end overlap or eaves. 3 screws at first intermediate purlin of the sheet. 3 screws at second intermediate purlin of the sheet. 3 screws at third intermediate purlin of the sheet.



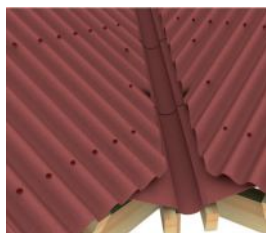
Ridge

The ridge element should be fastened at each corrugation of the overlapped sheet. The ridge element has to overlap the ONDULINE® sheet min 12 cm. The ridge elements are to be fixed in opposite direction to the prevailing winds.



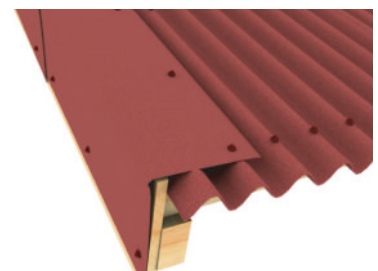
Valley

Fix valley board / trim purlin and line with ONDULINE® valley. The vertical valley depth should be sufficient to allow the water to flow. The sheets are cut across (parallel to the valley line). The overhang is max 4 cm.



Verge

Optimize aesthetic, waterproofing, and wind uplift resistance by using a verge element. Fix it first into the sidewall, then on the top of the corrugation.



The Onduline® Group

The Onduline® Group is a world leader in lightweight roofing and underroofing solutions and a well-recognized global player in the construction industry. With outlets in over 120 countries across 5 continents, Onduline® is firmly oriented towards its end users.



To meet the needs and expectations of our users, Onduline® delivers robust yet flexible solutions offering guaranteed protection for buildings and the people inside.

Onduline®'s core values come with a "protection above all" pledge. We strive to constantly improve the way we work in order to provide our clients with affordable and ecologically responsible roofing and solutions that improve the indoor and outdoor environment and offer a better climate to live and work in.



- **Worldwide leader** in lightweight roofing
- **75 years** of industry experience
- Around **1600 employees** from **43** nations
- **9 plants** in **8 countries**, fully certified
- Present in over **120 countries** via **40 subsidiaries**
- Over **150 million m²** of roofing solutions sold every year

OFIC Building Materials India Pvt. Ltd.

CIN No. : U45309KA2008PTC048153
Unit 307, 2nd floor, Prestige Plaza,
Yelahanka New Town Main Road, Yelahanka,
Bengaluru - 560 065
Tel : +91 91080 00444 / +91 95136 17160
Email: sales@ondulineindia.com

in.onduline.com



Onduline®

Lightweight Roofing Systems